

TAJMAC-FRANCE

CATALOGUE PINCES



MONOBROCHE
MULTIBROCHES
EMBARREUR

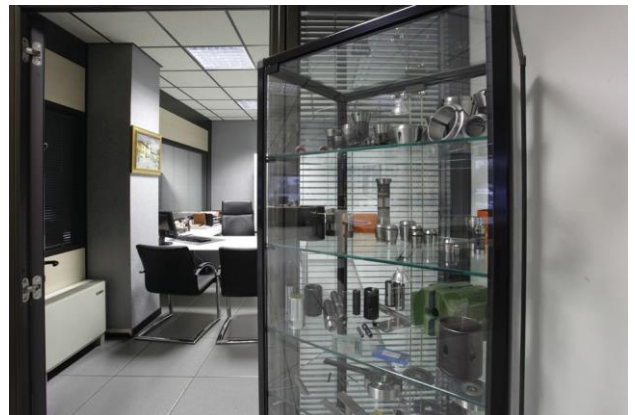
NOTRE ENTREPRISE

Depuis plus de 20 ans, TAJMAC le célèbre fabricant de machines-outils italien est implanté en Haute-Savoie au cœur de la Technic-Vallée. TAJMAC-France, représente la fusion de plusieurs constructeurs dont WICKMAN, MANURHIN-K'MX et MORI-SAY, qui aujourd'hui appartiennent toutes à TAJMAC-MTM.

L'agence de Vougy est spécialisée dans la vente de tours, le dépannage et la fourniture des pièces détachées, appareillages pour les tours MORI-SAY, WICKMAN, MANURHIN-K'MX, ainsi que pour les embarreurs CUCCHI-BLT.

TAJMAC-FRANCE, est présent sur le marché des machines neuves avec les tours multibroches MORI-SAY. L'agence est également présente sur le créneau des tours à poupées mobiles avec la gamme MANURHIN-K'MX. Dans le but de proposer des solutions clés en main à ses clients, TAJMAC-France commercialise les embarreurs CUCCHI-BLT.

En plus de ses activités de fabricant, TAJMAC-France, est aussi présent sur le marché de l'occasion et du rétrofit pour les tours à cames de marque GILDEMEISTER, INDEX, SCHUTTE, PITTLER, ET WICKMAN. Elle dispose également d'un stock de pièces détachées important afin d'assurer la maintenance des tours multibroches et les embarreurs automatiques dans la vallée de l'Arve et partout en France.



Afin de mieux répondre à la demande de ses clients, TAJMAC-France a décidé de développer son activité de commercialisation de pinces pour les tours multibroches, monobroches, et embarreurs.

Les compétences et l'expérience de ses collaborateurs, permettent à TAJMAC-France de fournir un support technique de qualité très important pour ses clients.

T ypologie de pince

Preuve de concentricité

$\varnothing d$	L	Standard limite max
da 0.5 a 1	3	0.015
da 1 a 1.6	6	0.02
da 1.6 a 3	10	0.02
da 3 a 6	16	0.02
da 6 a 10	25	0.02
da 10 a 18	40	0.03
da 18 a 24	50	0.03
da 24 a 30	60	0.03
da 30 a 50	80	0.04
da 50	100	0.04

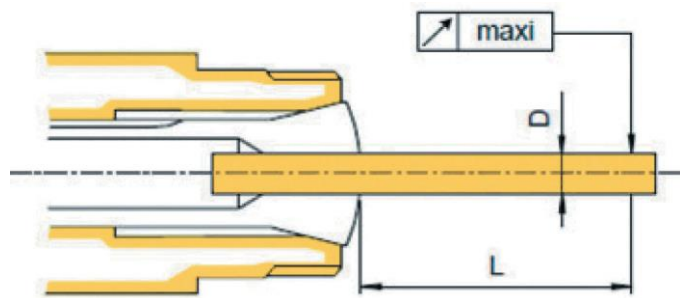
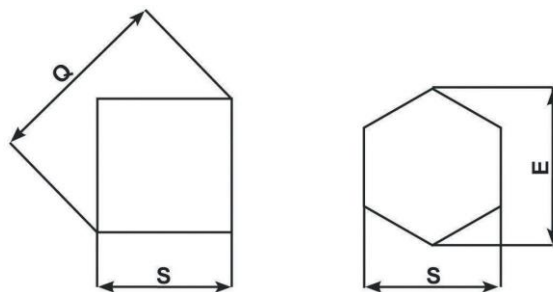


Tableau pour le calcul de la diagonale



S	Q	E
3	4.2	3.5
4	5.7	4.6
5	7.1	5.8
6	8.5	6.9
7	9.9	8.1
8	11.3	9.2
9	12.7	10.4
10	14.1	11.5
11	15.6	12.7
12	17	13.8
13	18.4	15
14	19.8	16.2
15	21.2	17.3

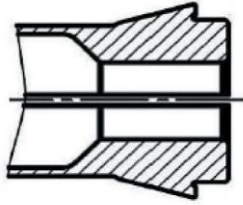
S	Q	E
16	22.6	18.5
17	24	19.6
18	25.4	20.8
19	26.9	21.9
20	28.3	23.1
21	29.7	24.3
22	31.1	25.4
23	32.5	26.6
24	33.9	27.7
25	35.4	28.9
26	36.8	30.1
27	38.2	31.2
28	39.6	32.4

S	Q	E
29	41	33.5
30	42.4	34.6
31	43.8	35.8
32	45.3	36.9
33	46.7	38.1
34	48.1	39.3
35	49.5	40.4
36	50.9	41.6
37	52.3	42.7
38	53.7	43.9
39	55.2	45
40	56.6	46.2
41	58	47.6

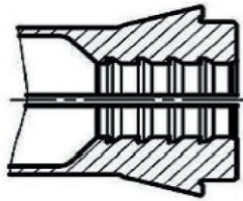
S	Q	E
42	59.4	48.5
43	60.8	49.7
44	62.2	50.8
45	63.6	52
46	65.1	53.1
47	66.5	54.4
48	67.9	55.5
49	69.3	56.6
50	70.7	57.7
51	72.1	59
52	73.5	60.1
53	75	61.2
54	76.4	62.4

S	Q	E
55	77.8	63.5
56	79.2	64.7
57	80.6	65.1
58	82	67
59	83.4	68.2
60	84.4	69.3
61	86.2	70.5
62	87.6	71.6
63	89	72.8
64	90.5	74
65	90.5	74

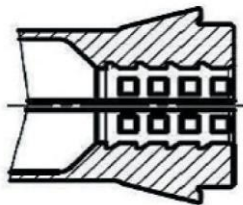
Forme d'alésage



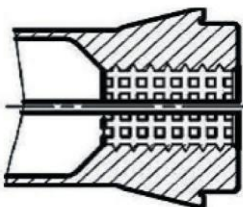
PERÇAGE LISSE



PERÇAGE RAINURE

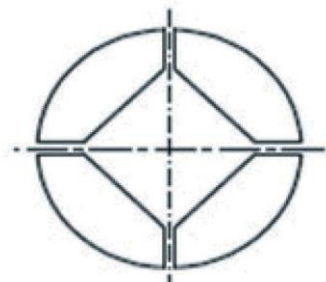
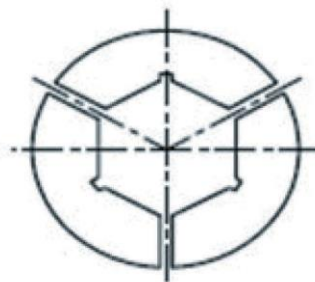
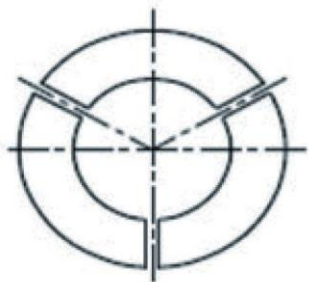


PERÇAGE QUADRILLE



PERÇAGE POINTE DIAMANT

Formes standards des pinces





Sommaire

Pinces monobroches P.06

Pinces multibroches P.11

Pinces embarreurs P.24





Pinces monobroches

Pinces à poussette

Pinces à poussette simple cône

Pinces à changement rapide

Pinces pour broche à changement rapide type Hainbuch

Canons de guidage pour poupées mobile

Canons de guidage pour les tours à poupée mobile type Manurhin-K'MX, Citizen, Gildemeister, Star

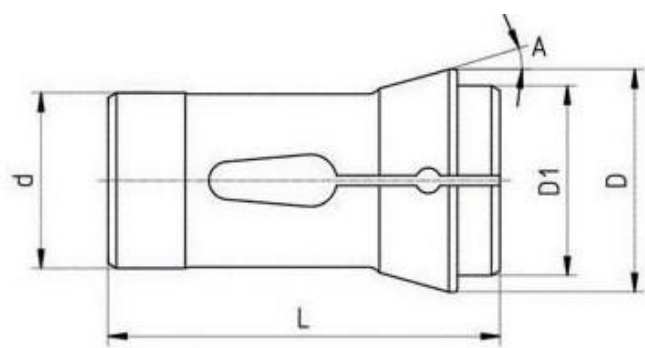
Pinces ER

Pinces porte-outil type ER

Pinces d'avance

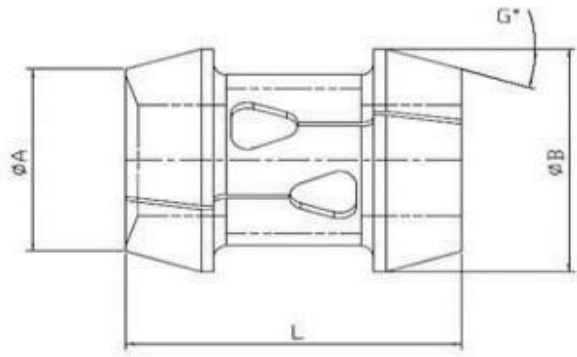
Pinces pour alimentation manuelle de barre pour tours Index





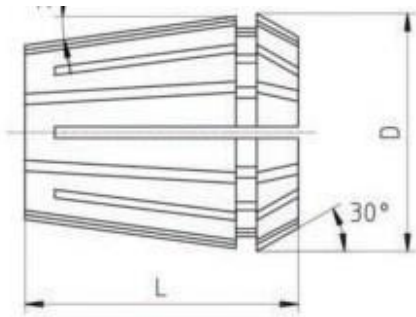
Pinces à poussée cône simple

Code	Description	d	D	L	a	Rond max	Hexagonale max
101 E	F8	8.0	12.0	42.0	16°	6.0	-
116 E	F13	13.0	19.0	64.0	16°	10.0	8.0
120 E	F15	15.0	21.0	64.0	16°	12.0	10.0
1212 E	F16	16.0	21.0	64.0	16°	13.0	11.0
136 E	F20-201	20.0	26.0	54.0	15°	16.0	12.0
138 E	F20-87	20.0	28.0	67.0	16°	16.0	12.0
140 E	BA15	22.0	30.0	55.0	15°	18.0	15.0
145 E	F25	25.0	35.0	77.0	16°	20.0	17.0
148 E	BA20	28.0	38.0	70.0	15°	23.0	20.0
1446 E	F30-101	30.0	38.0	65.0	15°	25.0	22.0
157 E	F30-63	30.0	42.0	80.0	16°	25.0	22.0
161 E	BA25	32.0	45.0	75.0	15°	26.0	22.0
162 E	IX25	35.0	43.0	70.0	15°	25.0	22.0
163 E	BA30	35.0	48.0	80.0	15°	30.0	26.0
1536 E	F37	37.0	47.0	92.0	16°	32.0	27.0
171 E	BA36	42.0	55.0	94.0	15°	36.0	32.0
173 E	BA42	48.0	60.0	94.0	15°	42.0	36.0
177 E	BA52	58.0	70.0	94.0	15°	52.0	45.0
185 E	BA60	66.0	84.0	110.0	15°	60.0	52.0
BA70	BA70	80.0	98.0	115.0	15°	70.0	60.0
BA80	BA80	95.0	117.0	125.0	15°	80.0	68.0



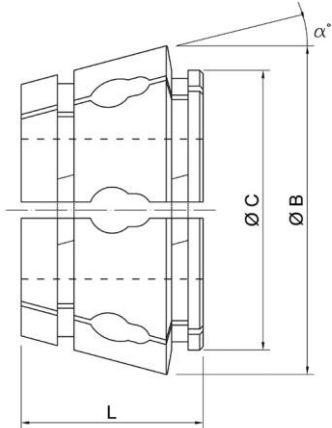
Pinces de serrage double cône

Code	A	B	L	a	Rond max	Hexagonale max
BD32	39.0	50.0	70.0	17°	32.0	27.0
BD42	46.0	57.0	80.0	17°	42.0	36.0
BD45	49.0	60.0	80.0	17°	45.0	38.0
BD52	60.0	70.0	80.0	16°	52.0	45.0
BD60	70.0	81.0	90.0	17°	64.0	52.0
BD70	80.0	91.0	100.0	17°	70.0	60.0
BD80	95.0	108.0	105.0	17°	80.0	68.0



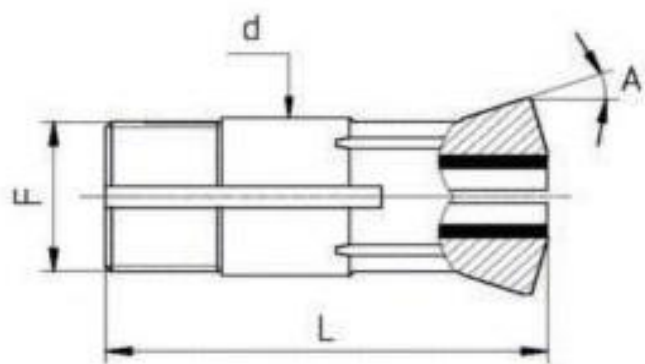
Pinces ER

Code	Description	D	L	Rond max	Hexagonale max
4009E	ER11	11.5	18.0	7.0	-
426E	ER16	17.0	27.0	12.0	-
428E	ER20	21.0	31.0	15.0	-
430E	ER25	26.0	35.0	20.0	-
470E	ER32	33.0	40.0	25.0	-
472E	ER40	41.0	46.0	30.0	-



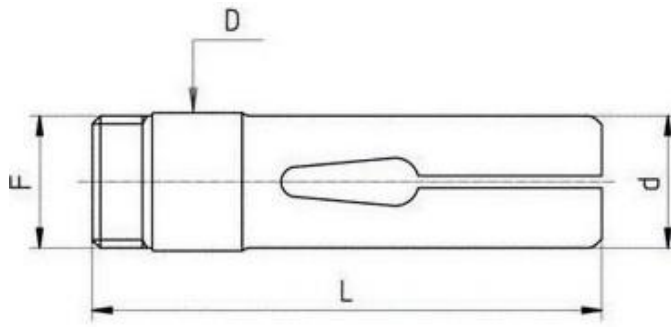
Pinces à changement rapide type Hainbuch

Code	D	L	Rond max	Hexagonale max
SK32BZI	57.8	47.0	32.0	27.0
SK42BZI	79.3	47.0	42.0	36.0
SK52BZI	79.2	46.0	52.0	45.0
SK65BZI	99.65	58.0	65.0	56.0
SK80BZI	114.5	53.0	80.0	68.0



Canons de guidage pour poupées mobiles

Code	d	L	a	F	Rond max	Hexagonale max
853T	18.0	59.0	30°	16X1	13.0	11.0
1354T	22.0	68.0	16°	19X1	16.0	14.0
39001T	22.0	68.0	16°	22X1	18.0	15.0
605T	24.0	61.0	30°	24x1	18.0	14.0
1357T	28.0	81.0	30°	25x1	21.0	18.0
223T	28.0	82.0	16°	25x1	21.0	18.0
227T	34.0	87.5	10°	34X1	25.0	22.0
229T	42.0	82.0	16°	40X1	32.0	28.0
106T	48.0	81.0	30°	48x1.25	42.0	36.0



Pinces d'avance

Code	Description	d	L	F	Rond max	Hexagonale max
207E	DG12	18.0	70.0	M16X1 Sin.	12.0	11.0
217E	DG12/16	21.0	70.0	M20X1 Sin.	16.0	14.0
220E	C19	24.0	85.0	M22X1 Sin.	18.0	16.0
236E	C29	30.0	95.0	M28X1 Sin.	24.0	21.0
237E	A25	31.0	90.0	M29X1 Sin.	25.0	22.0
254E	B42	42.0	116.0	M40X1 Sin.	36.0	30.0
273E	B60	60.0	140.0	M58X1 Sin.	52.0	45.0



Pinces Multibroches

Pinces Gildemeister

Pinces pour les tours multibroches Gildemeister AS16/20 GS/GM20 GM32/35
GM42 AS48/67

Pinces Mori-Say

Pinces pour les tours multibroches Mori-Say 6/20 626 6/25 6-8/32 6-8/42
6/57 6/67

Pinces Schütte

Pinces pour les tours multibroches Schütte SE16 SE25 SF/AF32 AD40 SF42
SD50 SF51 SF63 SF67 SF81

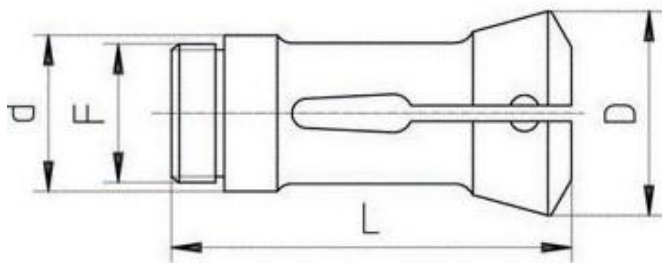
Pinces Wickman

Pinces pour les tours multibroches Wickman 5/8" 1" 1"3/8 1"3/4 2"1/4 2"5/8

Pinces Tornos

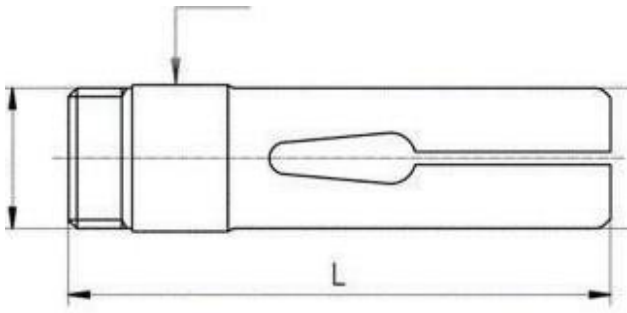
Pinces pour les tours multibroches Tornos AS14 SAS16 BS20
Multi Deco 26/6 20





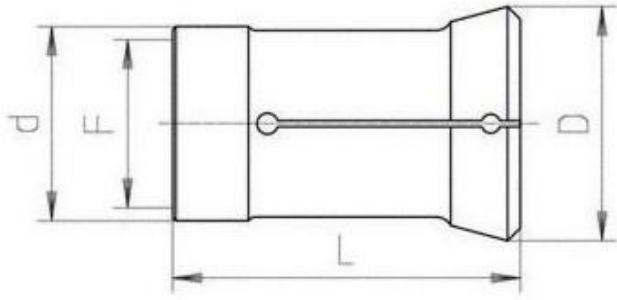
Pinces de serrage Gildemeister

Code	Description	d	D	L	a	F	Rond max	Hexagonale max
9013E	AS12	26.8	34.0	88.0	15°5'	M24X1.0 Sin.	12.0	10.0
9012E	AS16/20 GS/ GM20	34.0	42.0	90.0	16°	M30X1.0 Sin.	24.0	19.0
9017E	AS16/20 GS/ GM20 Passage 25	38.0	45.5	90.0	16°	M34.5X0.75 Sin.	27.0	24.0
9023E	GM16	30.0	39.0	80.5	15°	AtcB 27.12x1,5 60	16.0	14.0
9045E	AS25	45.0	60.4	164.0	15°	M40X1.0 Sin.	25.0	22.0
9046E	GS25 Passage 32	45.0	60.4	164.0	15°	M42X1.0 Sin.	26.0	22.0
9069E	AS32 GM32/35	53.0	69.4	139.0	15°	M48X1.5 Sin.	38.0	31.0
9115E	GM42	64.0	80.5	134.0	15°	M59X1.5 Sin.	45.0	40.0
9132E	AS48	70.0	90.4	167.5	15°	M65X1.5 Sin.	53.0	45.0
9178E	AS67	90.0	115.4	183.5	15°	M85X1.5 Sin.	67.0	55.0



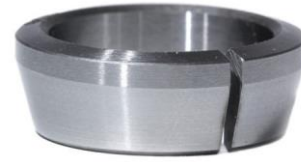
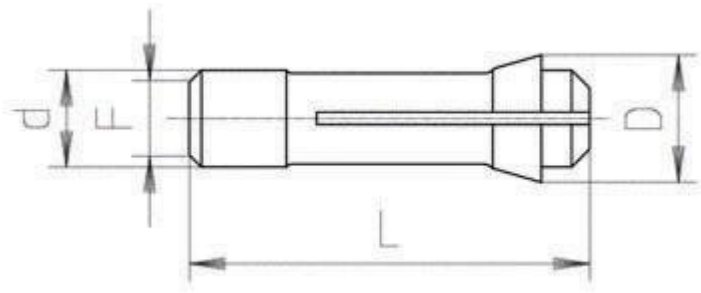
Pinces d'avance Gildemeister

Code	Description	d	D	L	F	Rond max	Hexagonale max
9259E	AS12	17.5	19.5	82.0	M17X1.0	12.0	10.0
9258E	AS16/20 GS/ GM20	25.0	25.0	90.0	M24X1.0	20.0	17.0
9288E	AS16/20 GS/ GM20 PASSAGE 25	30.0	30.5	90.0	M28.5X0.75	25.0	22.0
9268E	GM16	20.0	22.0	86.0	M20X1.0	16.0	14.0
9287E	AS25	32.5	33.0	140.0	M30X1.0 Sin.	25.0	21.0
9336E	AS/GM32 SX	40.0	41.2	136.0	M38X1.5 Sin.	32.0	28.0
9335E	GM35 DX	41.0	41.2	136.0	M39X1.0	35.0	31.0
9374E	GM42	50.2	51.5	136.0	M48X1.5	42.0	37.0
9368E	AS48	56.0	57.0	136.0	M54X1.5 Sin.	48.0	42.0
9447E	AS67	76.0	77.5	170.0	M74X1.5 Sin.	67.0	58.0



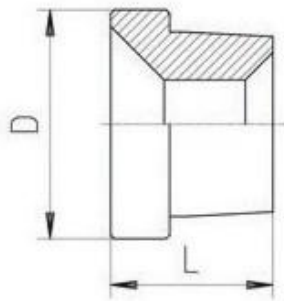
Pinces Pick-up Gildemeister

Code	Description	d	D	L	a	F	Rond max	Hexagonale max
C1101580	AS12	15.8	22.0	85.0	5°	M13X0.75 Sin.	12.0	10.0
Q0001870	GM16	18.7	25.0	51.5	8°	Atcb 21x1,5 60°	16.0	14.0
C1102600	AS16/20 GS/ GM20 PNEU MATIQUE	26.0	28.5	80.0	6°	21.5X0.75	20.0	17.0
C0002800	AS16/20 GS/ GM20 IDRAU- LIQUE	28.0	32.0	64.0	8°	M24X1.5 Sin.	25.0	20.0
Q0002800	GM20 CNC	28.0	32.0	73.0	8°	Atcb 24.8x2.7	24.5	21.0
C1103000	AS32	30.0	34.7	63.0	15°	M20X1.5	22.0	21.0
C0003900	AS32	39.0	44.0	90.0	8°	M34X1 Sin.	35.0	28.0
C1103802	AS32	38.0	43.10	80.0	15°	M24X1.5	32.0	28.0
Q0003900	GM32/35	39.0	44.0	82.0	8°	AtcBØ11x4	32.0	28.0
Q0004700	GM42	47.0	52.5	73.0	8°	AtcBØ29x2.7	42.0	36.0
C0005600	AS48	56.0	60.0	95.0	8°	M51X1 Sin.	48.0	42.0
C1104504	AS67	45.0	90.1	100.0	15°	M28X1,5	67.0	58.0



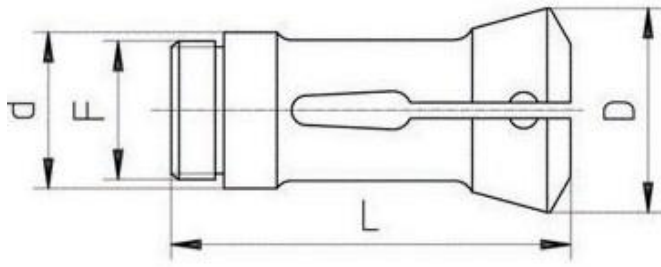
Broches frontales Gildemeister

Code	Description	d	D	L	Rond max	Hexagonale max
PPGD20	AS16/20 GS/ GM20	20.0	26.0	60.0	20.0	-



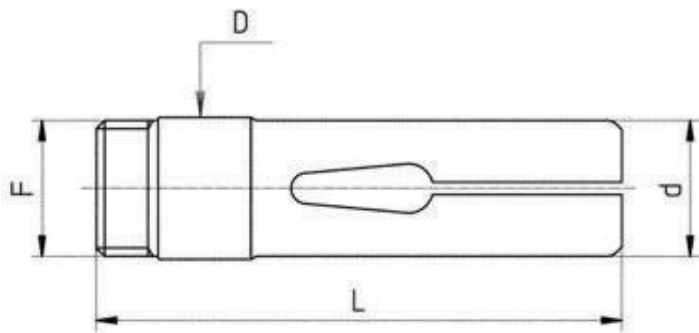
Douilles guides barres Gildemeister

Code	Description	d	D	L	Rond max	Hexagonale max
T1101851	GM16	16.0	18.5	18.0	13.0	10.0
T1101850	GM16	18.5	0.0	12.0	16.0	14.0
T1102850	AS16/20 GS/ GM20	28.5	0.0	10.0	25.0	22.0
T1102851	AS16/20 GS/ GM20	25.0	28.5	25.0	20.0	17.0
T1103020	AS25	26.3	30.2	8	25	22
T1104381	AS25	33	43.8	27	25	22
T1104001	GM32	40.0	47.8	43.0	32.0	27.0
T1104201	GM35	42.0	47.8	43.0	35.0	30.0
T1104700	GM42	47.0	52.0	43.0	42.0	36.0
T1103590	AS32	32.7	35.9	9.0	32.0	27.0
T1104380	AS32	33.0	43.8	27.0	32.0	27.0
T1105190	AS48	49.7	51.9	16.0	48.0	42.0
T1105750	AS48	49.0	57.5	35.0	48.0	42.0



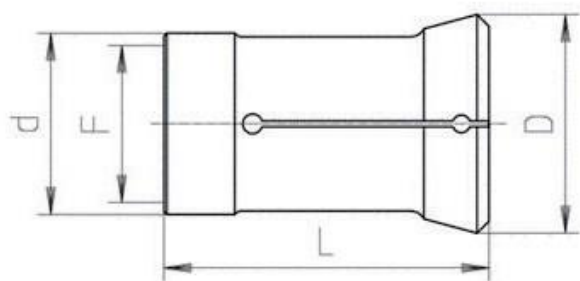
Pinces de serrage Mori-Say

Code	Description	d	D	L	a	F	Rond max	Hexagonale max
9012E	6/20	34.0	42.0	90.0	16°	M30X1 Sin.	24.0	19.0
9034E	6/25-626	41.3	54.5	132.0	15°	Ø37,8 X 24 Sin.	30.0	24.0
9069E	6/32-8/32 Tipo Gildemeister	53.0	69.4	139.0	15°	M48X1.5 Sin.	38.0	31.0
9070E	6/32-8/32 Tipo Schütte	53.0	69.3	136.5	15°	M47X1.5 Sin.	38.0	32.0
9112E	6/42-8/42 Tipo Schütte	62.9	78.3	157.0	15°	M56X1.5 Sin.	49.0	41.0
9142E	6/57	76.86	95.5	181.0	15°	Ø72,46 X 22 Sin.	62.0	53.0
9181E	6/67	92.07	111.0	165.0	15°	Ø85,72 X 18 Sin.	77.0	65.0



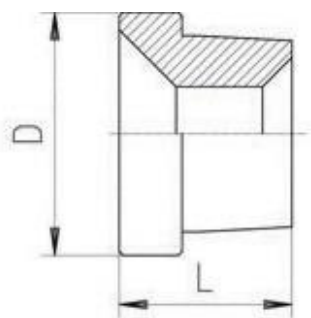
Pinces d'avance Mori-Say

Code	Description	d	D	L	F	Rond max	Hexagonale max
9258E	6/20	25.0	25.0	90.0	M24X1	20.0	17.0
9276E	6/25-626	31.0	31.9	133.0	Ø30,07 X 24 Sin.	25.0	22.0
9319E	6/32-8/32 Tipo Schütte	40.0	42.0	130.0	M38X1.5	32.0	28.0
9336E	6/32-8/32 Tipo Gildemeister	39.8	41.2	136.0	M38X1.5 Sin.	32.0	28.0
9372E	6/42-8/42 Tipo Schütte	48.0	51.0	158.0	M48X1.5	42.0	36.0
9409E	6/57	64.3	65.0	171.5	Ø65,509 X 22 Sin.	57.0	49.0
9445E	6/67	74.0	76.0	179.0	Ø73 X 24 Sin.	66.0	47.0



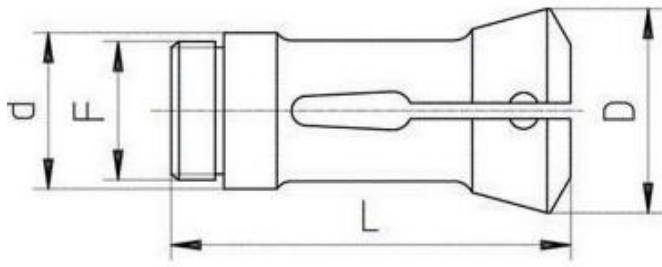
Pinces Pick-up Mori-Say

Code	Description	d	D	L	a	F	Rond max	Hexagonale max
C0002800	6/20	28.0	32.0	64.0	8°	M24X1.5 Sin.	24.0	20.0
Q0003550	6/25-626-6/32-8/32	35.5	40.0	80.0	8°	AtcB Ø 27 x 2,7 - 30	32.0	27.0
Q0004700	6/42-8/42	47.0	52.5	73.0	8°	AtcBØ29x2.7	42.0	36.0
Q4506000	6/57-6/67	60.0	72.6	75.0	15°10'	AtcBØ29x2.5	51.0	42.0



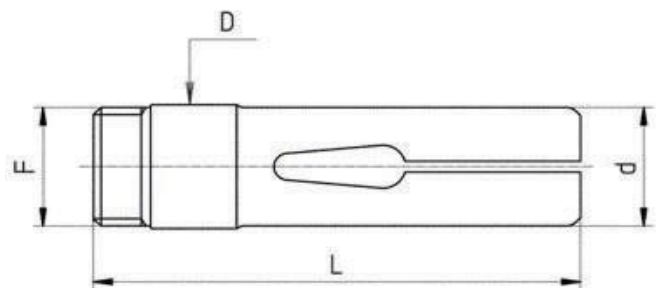
Douilles guides barres Mori-Say

Code	Description	d	D	L	Rond max	Hexagonale max
TMS620	6/20	24.0	25.0	28.2	20.0	17.0
TMS625	6/25	0.0	30.0	18.0	25.0	22.0
TMS626	626	35.0	42.5	40.0	26.0	23.0
TMS632	6/32-8/32	0.0	36.0	18.0	32.0	28.0
TMS642	6/42-8/42	0.0	46.0	18.0	42.0	36.0
TMS667	6/67	0.0	75.0	25.0	67.0	57.0



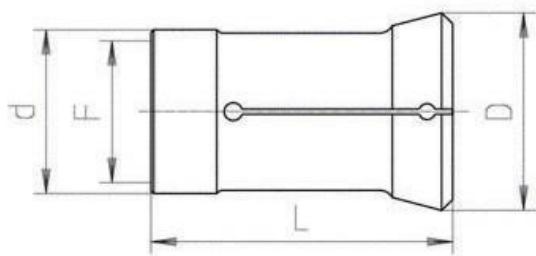
Pinces de serrage Schütte

Code	Description	d	D	L	a	F	Rond max	Hexagonale max
9015E	SF13	25.0	36.1	75.0	15° 10'	M22X1 Sin.	13.0	11.0
9007E	SE16/18	31.9	42.0	84.0	15°	M28X1 Sin.	19.0	17.0
90076H	SG18-AG20 Filetée	32.0	41.8	84.0	15°	M28X1 Sin.	18.0	16.0
90078H	SG18-AG20 Fil. Filetée	320.0	41.5	84.0	15°	M30X1 Sin.	23.0	19.0
9016E	SF20	32.0	41.5	84.0	15°	M30X1 Sin.	20.0	17.0
9039E	SD/SE25-AF26 SF26	46.0	60.3	120.0	15°	M40X1.5 Sin.	30.0	28.0
SEF0020	36PC	56.0	72.0	139.0	15°	M52X1.5 Sin.	36.0	31.0
9070E	SD/SF/AF32	53.0	69.3	136.5	15°	M47X1.5 Sin.	38.0	32.0
9112E	AD40-SF42	62.9	78.3	157.0	15°	M56X1.5 Sin.	49.0	41.0
9139E	AF51-SF51-SD50	75.0	97.8	187.0	15°	M68X1.5 Sin.	51.0	44.0
9179E	SF63	90.0	115.3	212.0	15°	M82X1.5 Sin.	63.0	55.0
9187E	SF67	89.9	115.4	180.0	15°	M85X1.5 Sin.	70.0	63.0
9210E	SF81	109.0	138.8	241.0	15°	M100X1.5 Sin.	80.0	73.0



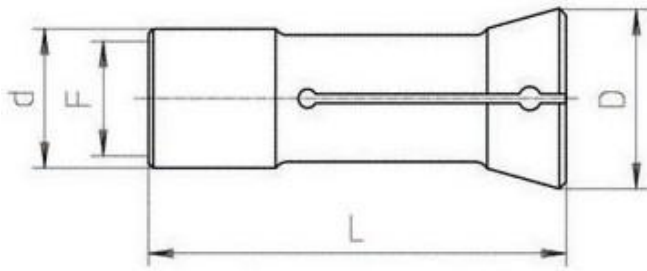
Pinces d'avance Schütte

Code	Description	d	D	L	F	Rond max	Hexagonale max
9261E	SF13	17.0	19.6	77.0	M18X1	11.0	11.0
9255E	SE16/18- SG18-AG20	23.0	25.0	88.0	M23X1	16.0	17.0
9262E	SF20	25.0	27.0	88.0	M25X1	17.0	16.0
9282E	SD/SE25-AF/ SF26	33.0	35.0	118.0	M33X1.5	23.0	19.0
9319E	SD/SF/AF32	40.0	42.0	130.0	M38X1.5	28.0	17.0
9372E	AD40-SF42	48.0	51.0	158.0	M48X1.5	36.0	28.0
9406E	SD50/AF51	58.0	62.0	180.0	M58X1.5	51.0	44.0
9450E	SF63	72.0	77.0	210.0	M72X1.5 Sin.	63.0	55.0
9456E	SF67	78.0	78.0	196.0	M75X1.5 Sin.	67.0	50.0
9474E	SD80	90.0	92.8	238.0	M88X1.5 Sin.	80.0	70.0



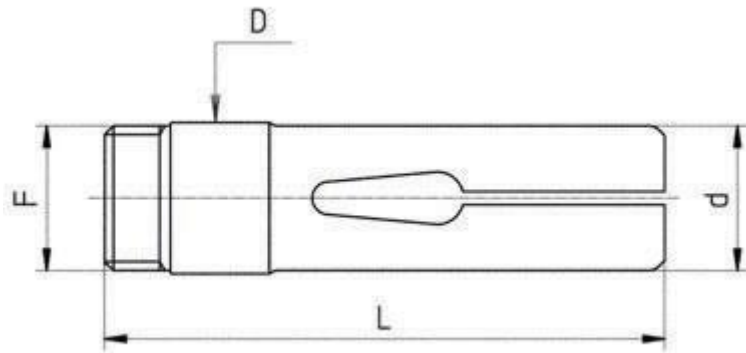
Pinces Pick-Up Schütte

Code	Description	d	D	L	a	F	Rond max	Hexagonale max
Q2202500	SG18-AG20	25.0	32.1	91.5	15°10'		19.0	16.0
C0002800	SE16/25	28.0	32.0	64.0	8°	M24X1.5 Sin.	24.0	20.0
C2202800	SF20/SF26	28.0	36.0	53.0	15°10'	M24X1.5 Sin.	22.0	19.0
C2203200	SE25-SF26	32.0	46.0	71.0	15°	M22X1.5 Sin.	26.0	23.0
Q0003550	SE25-SF26	35.5	40.0	80.0	8°10'	AtcBØ27x2.7 30°	32.0	27.0
C0003900	SD/SF/AF32	39.0	44.0	90.0	8°	M34X1 Sin.	35.0	28.0
Q0004700	AD40-SF42	47.0	52.5	73.0	8°	AtcBØ29x2.7 30°	42.0	36.0
A2205200	AD40-SF42	52.0	60.5	60.0	15° 10'		40.0	35.0
C0005600	AD40-SF42-SF51	56.0	60.0	95.0	8°	M51X1 Sin.	48.0	42.0
A2204400	S32PC-S36PC	44.0	54.0	76.0	15°	M51X1 Sin.	34.0	-



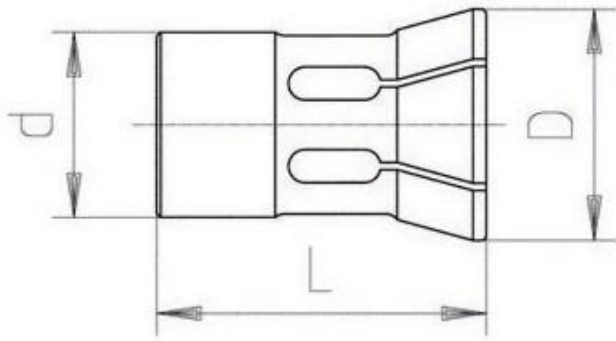
Pinces de serrage Wickman

Code	Description	d	D	L	a	F	Rond max	Hexagonale max
9014E	5/8"	29.4	38.1	92.0	15°	Ø26,21 X 24	17.0	15.0
9034E	1"	41.3	54.5	132.0	15°	Ø37,8 X 24 Sin.	30.0	24.0
PIWOVE	1" passage 30mm.	49.21	60.72	110.0	15°	M44.2X1 Sin.	34.0	28.0
9072E	1"3/8	55.47	67.0	117.0	15°	Ø50,927 X 22 Sin.	41.0	34.0
9111E	1"3/4	64.21	78.5	127.0	15°	Ø60,45 X 16 Sin.	46.0	40.0
9142E	2"1/4	76.86	95.5	181.0	15°	Ø72,46 X 22 Sin.	62.0	53.0
9181E	2"5/8	92.07	111.0	165.0	15°	Ø85,72 X 18	77.0	65.0



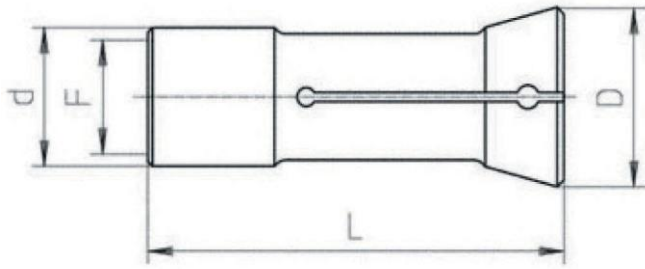
Pinces d'avance Wickman

Code	Description	d	D	L	F	Rond max	Hexagonale max
9260E	5/8"	21.6	21.6	86	Ø19,53 X 24 Sin.	16.0	13.0
9276E	1"	31.0	31.9	133	Ø30,07 X 24 Sin.	26.0	22
9318E	1"3/8	41.5	42.84	118	Ø40,46 X 22 Sin.	36.0	31.0
9362E	1"3/4	51.5	52.21	127	Ø49,98 X 22 Sin.	44.0	38.0
9409E	2"1/4	64.3	65.1	171	Ø62,509 X 22 Sin.	57.0	49.0
9445E	2"5/8	74.0	76.0	179	Ø73 X 24 Sin.	66.0	47.0



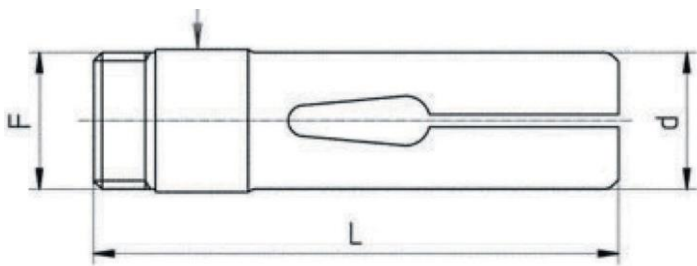
Pinces Pick-up Wickman

Code	Description	d	D	L	a	F	Rond max	Hexagonale max
C0002800	5/8"	28.0	32.0	64.0	8°	M24X1.5 Sin.	25.0	20.0
A1201900	5/8"	19.04	25.4	55.56	15°		14.0	12.0
A1202540	1"	25.4	38.0	94.0	15°30'		20.0	17.0
A1203960	1"3/8-3/4	39.67	65.0	122.0	15°		33.0	29.0
Q0003550	1"	35.5	40.0	80.0	8°	AtcBØ27x2.7 30°	32.0	27.0
C0006500	2"1/4	65.0	70.0	84.0	8°	M54X1 Sin.	57.0	49.0
Q0004700	1"3/8-3/4	47.0	52.5	73.0	8°	AtcBØ29x2.7	42.0	36.0



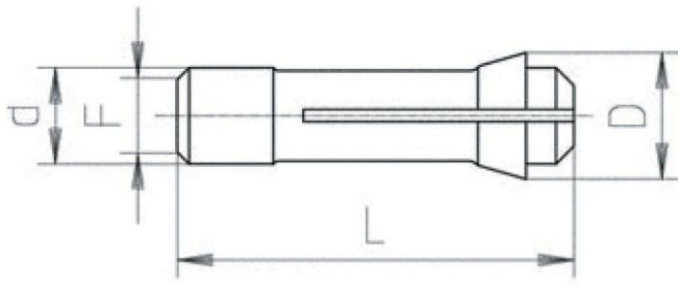
Pinces de serrage Tornos

Code	Description	d	D	L	a	F	Rond max	Hexagonale max
9001E	AS14	25.0	35.0	75.0	15°	M22X1	14.0	11.0
9021E	SAS16	25.0	35.0	94.0	15° 30'	M25X1	16.0	14.0
9020E	BS20	36.0	45.0	107.0	15° 30'	M33X1.25	20.0	17.0
9039E	MULTI-DECO 26	46.0	60.3	120	15°	M40X1.5 Sin.	30.0	28.0
9012E	MULTI-DECO 20	34.0	42.0	90.0	16°	M30X1.0 Sin.	24.0	19.0



Pinces d'avance Tornos

Code	Description	d	D	L	F	Rond max	Hexagonale max
9251E	AS14	17.5	18.0	70.0	M16X0.75	14.0	11.0
9265E	SAS16	20.5	22.8	98.0	M20X0.75	16.0	14.0
9266E	BS20	25.3	27.7	116.0	M25X1	20.0	17.0



Pinces Pick-up Tornos

Code	Description	d	D	L	a	F	Rond max	Hexagonale max
F16/830	AS14-SAS16	16.0	21.0	66.0	16°	M14X0.75	13.0	8.0
Q0003550	MULTI-DECO 26	35.5	40.0	80.0	8°	AtcBø27x2.7	32.0	27.0
Q0002800	MULTI-DECO 20	28.0	32.0	73.0	8°	AtcBø24.8x2.7	24.5	21.0



Pinces embarreurs

Pinces en acier avec filetage

Pinces en acier avec filetage pour embarreurs automatiques type Pietro Cucchi

Pinces plastiques avec filetage

Pinces plastiques avec filetage pour embarreurs automatiques type Pietro Cucchi

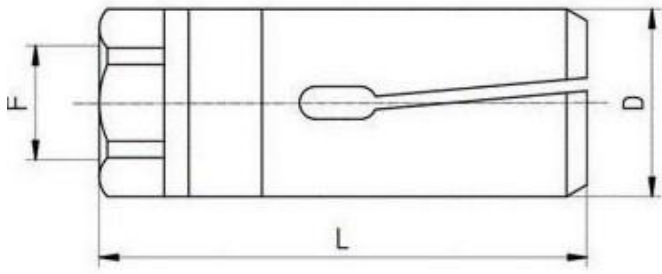
Pinces en acier à changement rapide

Pinces en acier pour embarreurs automatiques type lemca avec attache rapide à la prise

Pinces plastiques à changement rapide

Pinces en plastique à changement rapide pour embarreurs automatiques type lemca



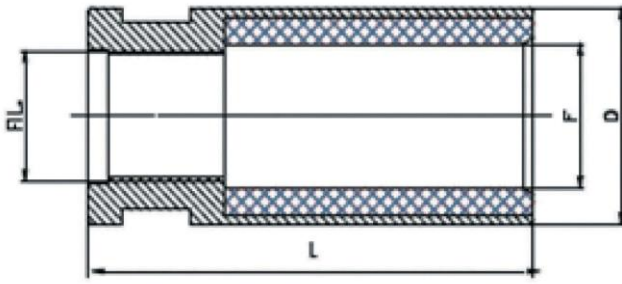


Pinces en acier avec filetage à gauche

Code	Description	D	L	F	Rond max	Hexagonale max
PB20	CUCCHI PB20	20.0	60.0	M10X1 Sin.	18.0	15.0
PB25	CUCCHI PB25	25.0	60.0	M14X1 Sin.	23.0	19.0
PB30	CUCCHI PB30	29.0	65.0	M18X1.5 Sin.	28.0	24.0
PB32	CUCCHI PB32	32.0	65.0	M18X1.5 Sin.	30.0	26.0
PB35	CUCCHI PB35	35.0	70.0	M18X1.5 Sin.	33.0	28.0
PB40	CUCCHI PB40	39.0	70.0	M25X1.5 Sin.	37.0	34.0
PB48	CUCCHI PB48	47.0	70.0	M30X1.5 Sin.	46.0	38.0
PB60	CUCCHI PB60	59.0	80.0	M30X1.5 Sin.	55.0	48.0
PB70	CUCCHI PB70	69.5	80.0	M30X1.5 Sin.	65.0	55.0

Pinces en acier avec filetage à droite

Code	Description	D	L	F	Rond max	Hexagonale max
036070	IEMCA	7.00	40.0	5X0.5	7.0	6.0
036100	CUCCHI	10.0	50.0	6X0.75	8.0	7.0
036101	IEMCA	10.0	40.0	6X0.75	8.0	7.0
036120	CUCCHI	12.0	52.0	7X0.75	10.0	8.0
036121	IEMCA	12.0	42.0	7X0.75	10.0	8.0
036140	CUCCHI	14.0	52.0	8X1	12.0	11.0
036150	CUCCHI	15.0	52.0	8X1	12.0	11.0
036151	IEMCA	15.0	42.0	8X1	13.0	11.0
036160	CUCCHI	16.0	52.0	8X1	14.0	12.0
036161	IEMCA	16.0	42.0	8X1	14.0	12.0
036180	CUCCHI	18.0	59.0	10X1	16.0	13.0
036200	CUCCHI - IEMCA	20.0	59.0	10X1	18.0	15.0
036220	CUCCHI - IEMCA	22.0	59.0	10X1	20.0	18.0
036250	IEMCA	25.0	59.0	10X1	23.0	19.0
036251	CUCCHI	25.0	59.0	14X1	23.0	19.0
036300	IEMCA	30.0	65.0	10X1	28.0	24.0
036301	CUCCHI	30.0	65.0	18X1.5	28.0	24.0
036320	IEMCA	32.0	65.0	10X1	30.0	25.0
036400	CUCCHI - IEMCA	40.0	70.0	25X1.5	37.0	32.0
036420	CUCCHI - IEMCA	42.0	70.0	25X1.5	39.0	33.0
036460	CUCCHI - IEMCA	46.0	72.0	25X1.5	42.0	34.0
036600	CUCCHI - IEMCA	60.0	80.0	25X1.5	55.0	48.0
036650	CUCCHI - IEMCA	65.0	80.0	25X1.5	60.0	50.0
036700	CUCCHI - IEMCA	70.0	80.0	25X1.5	65.0	55.0
036750	CUCCHI - IEMCA	75.0	80.0	25X1.5	70.0	60.0

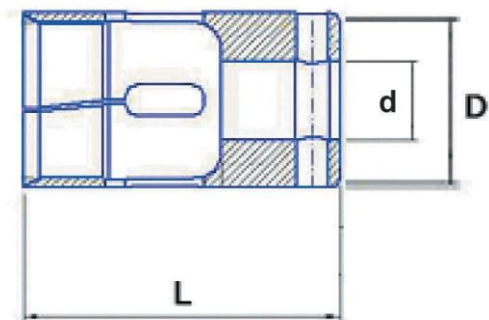


Pinces plastiques avec filetage à gauche

Code	Description	D	L	F
PCCHP19	PB19	18.5	60.0	M10X1 Sin.
PCCHP23	PB23	23.0	60.0	M14X1 Sin.
PCCHP24	PB24	24.0	60.0	M14X1 Sin.
PCCHP28	PB28	28.0	65.0	M18X1.5 Sin.
PCCHP29	PB29	29.0	65.0	M18X1.5 Sin.
PCCHP30	PB30	30.0	65.0	M18X1.5 Sin.
PCCHP32	PB32	32.0	65.0	M18X1.5 Sin.
PCCHP35	PB35	35.0	65.0	M18X1.5 Sin.
PCCHP38	PB38	38.0	70.0	M25X1.5 Sin.
PCCHP40	PB40	40.0	70.0	M25X1.5 Sin.
PCCHP42	PB42	42.0	70.0	M25X1.5 Sin.
PCCHP43	PB43	43.0	70.0	M30X1.5 Sin.
PCCHP46	PB46	46.0	70.0	M30X1.5 Sin.
PCCHP48	PB48	48.0	70.0	M30X1.5 Sin.
PCCHP50	PB50	50.0	70.0	M30X1.5 Sin.
PCCHP52	PB52	52.0	70.0	M30X1.5 Sin.
PCCHP56	PB56	56.0	80.0	M30X1.5 Sin.
PCCHP60	PB60	60.0	80.0	M30X1.5 Sin.
PCCHP65	PB65	65.0	80.0	M30X1.5 Sin.
PCCHP68	PB68	68.0	80.0	M30X1.5 Sin.
PCCHP72	PB72	72.0	80.0	M30X1.5 Sin.
PCCHP80	PB80	80.0	80.0	M30X1.5 Sin.

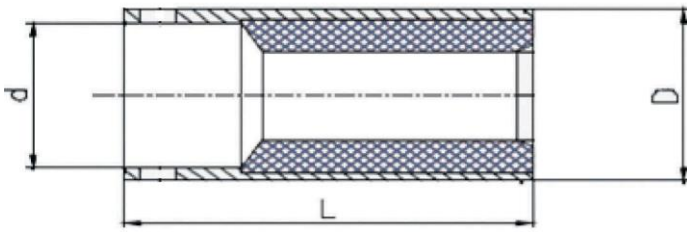
Pinces plastiques avec filetage à droite

Code	D	L	F
PCIMM07.5	7.05	40.0	M5X0.5
PCIMM10	10.0	40.0	M6X0.75
PCCHM10	10.0	52.0	M6X0.75
PCIMM12	12.0	42.0	M7X0.75
PCCHM12	12.0	52.0	M7X0.75
PCIMM15	15.0	42.0	M8X1
PCCHM15	15.0	52.0	M8X1
PCIMM18	18.0	42.0	M8X1
PCIMM20	19.0	60.0	M10X1
PCIMM25	25.0	60.0	M10X1
PCIMM30	30.0	65.0	M10X1
PCCHM30	30.0	65.0	M18X1.5
PCIMM32	32.0	65.0	M10X1
PCIMM35	35.0	65.0	M17X1
PCCHM35	35.0	65.0	M18X1.5
PCCHM40	40.0	70.0	M25X1.5
PCIMM42	42.0	70.0	M25X1.5
PCIMM45	45.0	80.0	M25X1.5
PCIMM50	50.0	80.0	M25X1.5
PCCHM50	50.0	80.0	M30X1.5
PCIMM55	55.0	80.0	M25X1.5
PCCHM55	55.0	80.0	M30X1.5
PCIMM60	60.0	80.0	M25X1.5
PCCHM60	60.0	80.0	M30X1.5
PCIMM65	65.0	80.0	M25X1.5
PCCHM65	65.0	80.0	M30X1.5
PCIMM68	68.0	80.0	M25X1.5
PCIMM70	70.0	80.0	M30X1.5
PCCHM70	70.0	80.0	M25X1.5
PCIMM72	72.0	80.0	M25X1.5



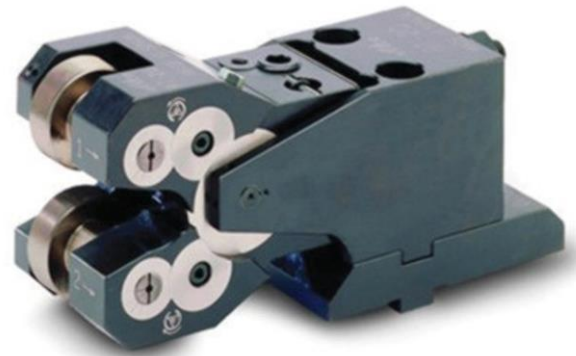
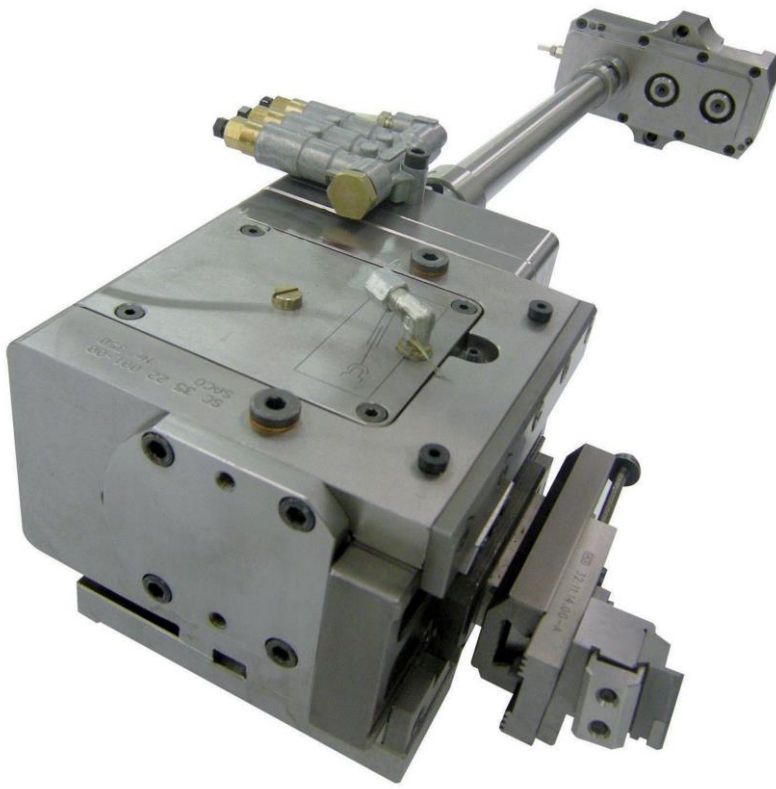
Pinces en acier à changement rapide

Code	D	L	d	Rond max	Hexagonale max
203E	15.0	40.0	11H7	13.0	10.0
218E	18.0	40.0	11H7	16.0	13.0
222E	25.0	65.0	20H7	23.0	19.0
227E	28.0	65.0	20H7	25.0	21.0
SHK32	32.0	65.0	20H7	29.0	25.0
SHK36	36.0	65.0	20H7	30.0	26.0



Pinces plastiques à changement rapide

Code	D	L	d
PCCIMFT12	12.0	50.0	8.0
PCIMFT15	15.0	80.0	11.0
PCIMFT18	18.0	50.0	11.0
PCIMFT20	20.0	65.0	14.0
PCIMFT21	21.0	72.0	14.0
PCIMFT25	25.0	72.0	20.0
PCIMFT29	29.0	72.0	20.0
PCIMFT32	32.0	72.0	20.0
PCIMFT36	36.0	72.0	20.0
PCIMFT42	42.0	72.0	20.0
PCIMFT45	45.0	72.0	20.0



TAJMAC-FRANCE
VOTRE PARTENAIRE POUR
L'APPAREILLAGE DE VOS TOURS
AUTOMATIQUES MULTIBROCHES

Nous sommes capables de vous fournir
les appareillages pour les tours

GILDEMEISTER, WICKMAN,
MORI-SAY, SCHÜTTE,
INDEX et TORNOS.





Nous proposons également les pièces détachées
pour les tours multibroches

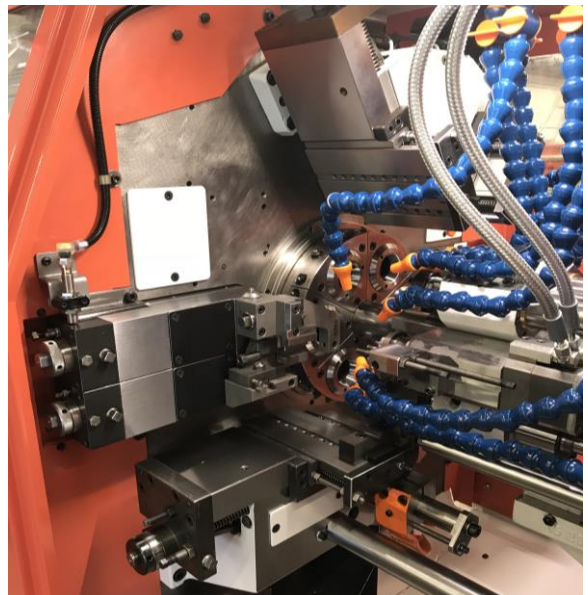
GILDEMEISTER, WICKMAN,
MORI-SAY et SCHÜTTE.



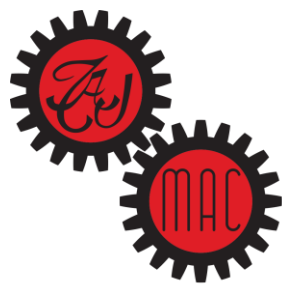


R ECONSTRUCTIONS

REVISION ET DEPANNAGE POUR TOURS
AUTOMATIQUES MULTIBROCHES ET
APPAREILLAGES GILDEMEISTER



P lan d'accès



TAJMAC
G R O U P



SUIVEZ-NOUS SUR NOS RÉSEAUX SOCIAUX





TAJMAC - FRANCE



85 rue Marie Curie
Z.A.C Des Grands Bois
74130 Vougy

Tel. (+33)4 50 34 00 41
Fax. (+33)4 50 34 04 43
www.tajmac-france.com
info@tajmac-france.com

